



Hekipia

TINYHOUSE

TOURISM

WHERE EVERY SPACE
IS EXCEPTIONAL



Hekipia

TINY HOUSE



a place to recharge

CONTENTS

PRACTICAL

- Editorial p.3
- A little bit of history p.4
- Our achievements p.6
- Indoor-outdoor living p.10
- Landscape integration p.12
- Adapting to the terrain p.14
- Support process p.16
- Constructional principle p.18
- Thermal comfort p.20
- CSR commitments p.21

CHALETS

- Zen+ atmosphere p.24
- Nature and nature+ atmospheres p.26

1-bedroom chalets

- Tiny home p.28
- Victoria p.30
- Morea p.32
- Morea xl p.34
- Noumea smart view p.36

2-bedroom chalets

- Columbia p.38
- Toronto p.40
- 2-bed Portland p.42
- PRM Liberty p.44
- Kingston35 p.46

3-bedroom chalets

- Kingston40 p.48
- Ottawa p.50
- 3-bed Portland p.52
- Northland p.54

TINY HOUSES WITH CANVAS ROOF

- Karavan’ principle p.58
- Karavan’ atmosphere p.60
- Karavan’6.6 p.62
- Karavan’6 p.64
- Karavan’7 p.66

TRAILERS

- Trailer atmosphere p.70
- Tiny trailer p.72
- Trailer 22 p.74

SEASONAL WORKERS

- Teamcamp p.78

PLANS

p. 80 to 84

EDITORIAL

ADAPT, GROW, INNOVATE

In 2026, HEKIPIA will continue to grow and confirm its role as a benchmark player in outdoor accommodation. Between product innovation, opening up to new markets and strengthening our industrial equipment, we are placing agility and quality at the heart of our approach to assist tourism professionals with their projects.

A European and international ambition

Our momentum now extends beyond the borders of France. Hekipia is firmly established on a European scale, while opening up new markets such as Morocco, where outdoor accommodation is developing well. This international reach confirms the relevance of our offering and our ability to adapt it to a variety of contexts.

Revamped industrial equipment

To keep pace with this growth, our industrial equipment continue to adapt: reorganising workflows, doubling joinery capacity and strengthening our teams. The aim is clear: to streamline production, improve lead times and maintain a high level of quality.

Competitive and recognised offering

In a challenging economic climate, our commitment to value for money remains a priority. The number of new customers is growing, and with good reason: our accommodation combines robustness with aesthetic appeal and cost-effectiveness, with solutions tailored to the actual operational conditions of professionals.

A rapidly expanding mobile range

2026 will mark a new phase of growth for Hekipia. Faced with soaring demand for mobile accommodation solutions that are comfortable and easy to install, we have expanded our mobile range to meet the needs of a fast-changing market.

Accommodation designed to evolve

2026 will also see the emergence of new models:

Morea XL is an optimised version that prioritises space, comfort and modularity. The larger master bedroom has a 160 cm bed, while the modular children’s bedroom offers a play area or extra sleeping space, and the revamped living room with built-in storage is practical and user-friendly.

The Ottawa model has been completely revamped, with a more fluid and brighter interior, and an even more comfortable living area.

Hekipia, a partner for tourism on the move

Hekipia remains true to its mission: to offer flexible, reversible, well-thought-out accommodation in the service of responsible, forward-looking tourism on the move.

A LITTLE BIT OF HISTORY...

Creation of GI Production, which provides the camping market with the very first rental accommodation solution and launches the Gitotel brand.

1986

Acquisition of the Gitotel brand and revival of the chalet design, manufacture and installation business.

2015

Market diversification and development of the offering dedicated to Temporary Housing and Individuals

2020

Increased production capacity for mobile products manufactured in the factory. Increase from 4 to 6 production lines.

2023

2006

First export of Hekipia chalets to the USA. Creation of Hekipia. Manufacture of the 1st “ready-to-camp” Canadienne wood & canvas rental tent.

2018

Inauguration of the new Hekipia factory. New organisation, new capacity, new ambitions.

2022

New showroom with 18 models on display. New 4,000 m² storage area for finished products.

2025

Doubling the production capacity of the joinery workshop

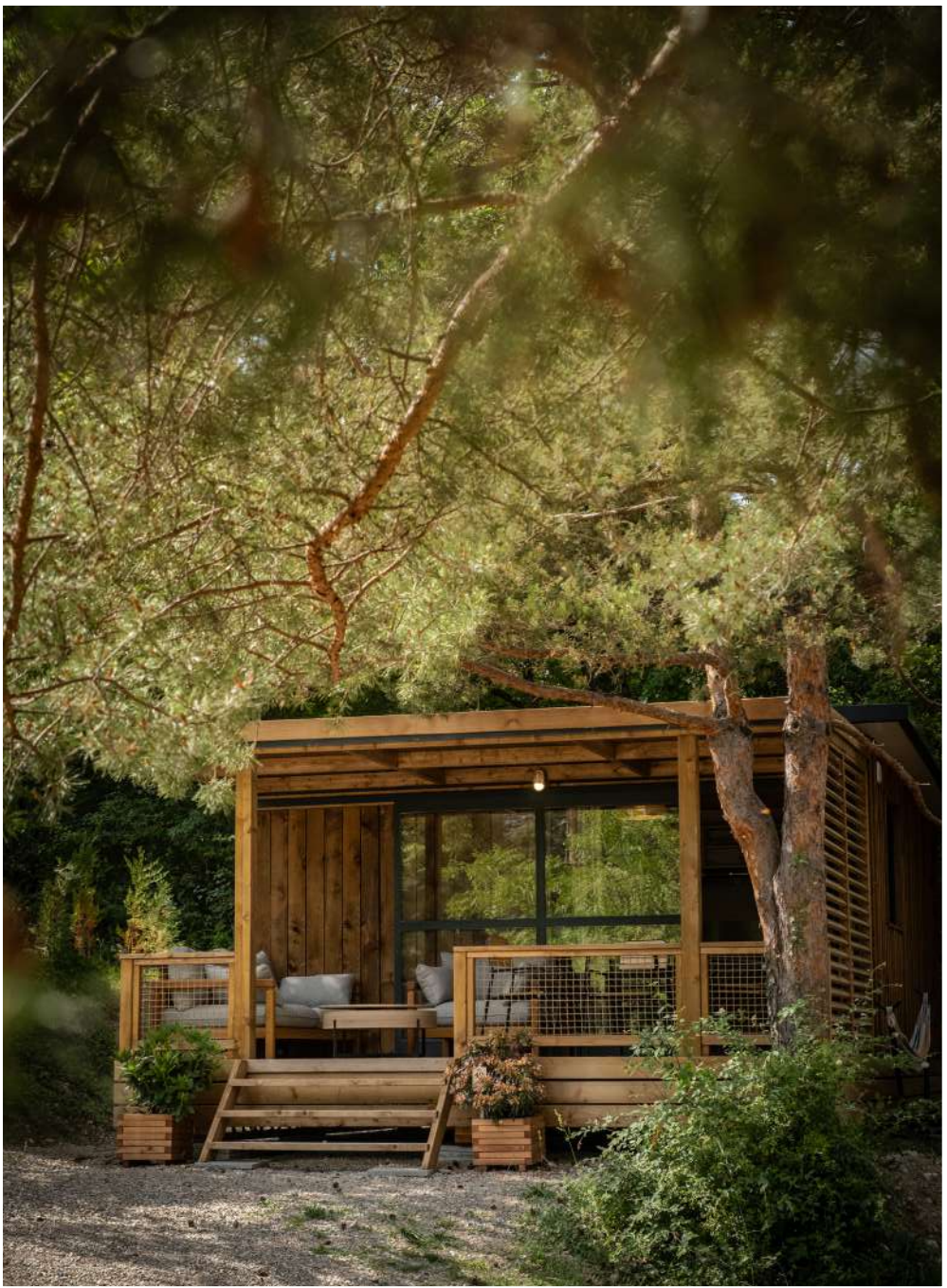
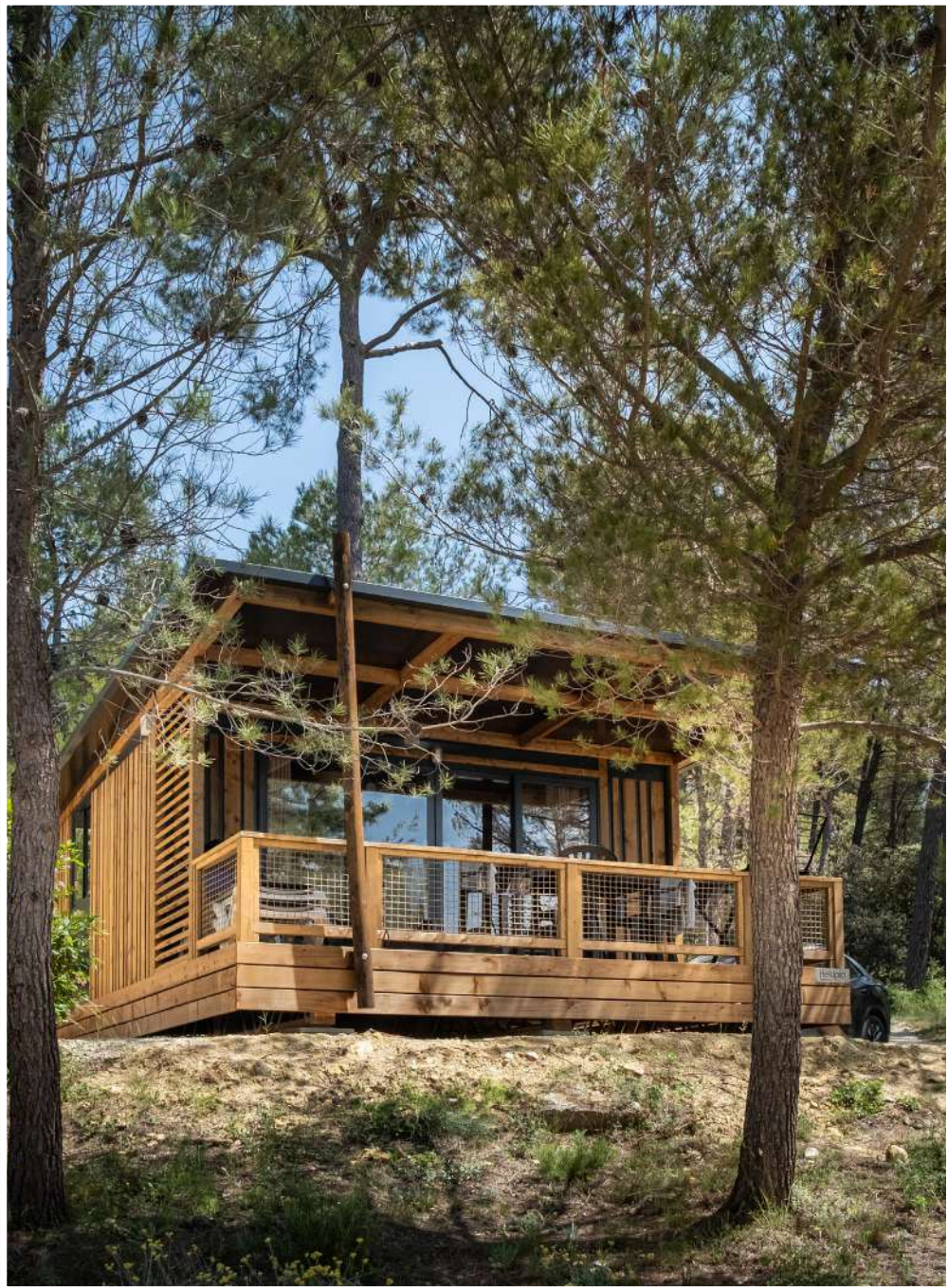
2.6 hectare site • 9,000 m² factory • 2,000 m² showroom • 15,000 m² logistics area • More than 70 employees



OUR ACHIEVEMENTS



Accommodation that blends
harmoniously into its surroundings





INDOOR-OUTDOOR LIVING



Large windows opening onto terraces with shaded pergolas.



CUSTOMISED CHALET LANDSCAPE INTEGRATION



Openwork wood cladding

Wooden slats in alternating widths on a charcoal grey panel. An aesthetically pleasing combination of wood and steel for a very modern look.



openwork wood cladding and plant integration



Products for every environment.

Embossed steel cladding

Available in white, embossed cladding requires no maintenance and is particularly suited to natural landscapes in the countryside or by the sea.



Wood cladding

Brown autoclaved wood cladding, with horizontal or vertical openwork slats, or in an agricultural version, adapts to all environments and gives a natural, authentic style to the chalet.



CUSTOMISED CHALET
SUPPORTS



As every plot of land is unique, we adapt our supports to ensure a stable, durable installation that blends in perfectly with its surroundings.



Flood risk areas and premium locations → chalet on stilts



Constrained areas & mobility → chalet on wheeled chassis



Optimising narrow plots of land → chalet on corbels



Reversibility and regulation on lightweight leisure housing → chalet on wooden frame

SUPPORT PROCESS WITH YOU EVERY STEP OF THE WAY

PRE-PURCHASE

- Initial contact with a Hekipia sales manager to understand your project
- Site visit, pre-installation and choice of accommodation
- Presentation and approval of the quotation

Immerse yourself in our world: a visit to the factory and showroom can make all the difference to your decision!

SIGNING THE CONTRACT

- Confirmation of financial and work conditions (*order process*)
- Saving the assembly or delivery date based on the production schedule
- Preliminary site visit by the site supervisor (*validation of access and layout, storage, prerequisites*)
- Marketing work (*access to our photo library*)
- Opening of assembly operations

POST-ACCEPTANCE

- Acceptance of tiny houses, handover of keys
- Your accommodation is ready to welcome your guests!

2,000 m² showroom

18 models on display, showcasing the various landscapes, interior atmospheres, comfort and equipment options.
A place to help you make your choices with confidence.



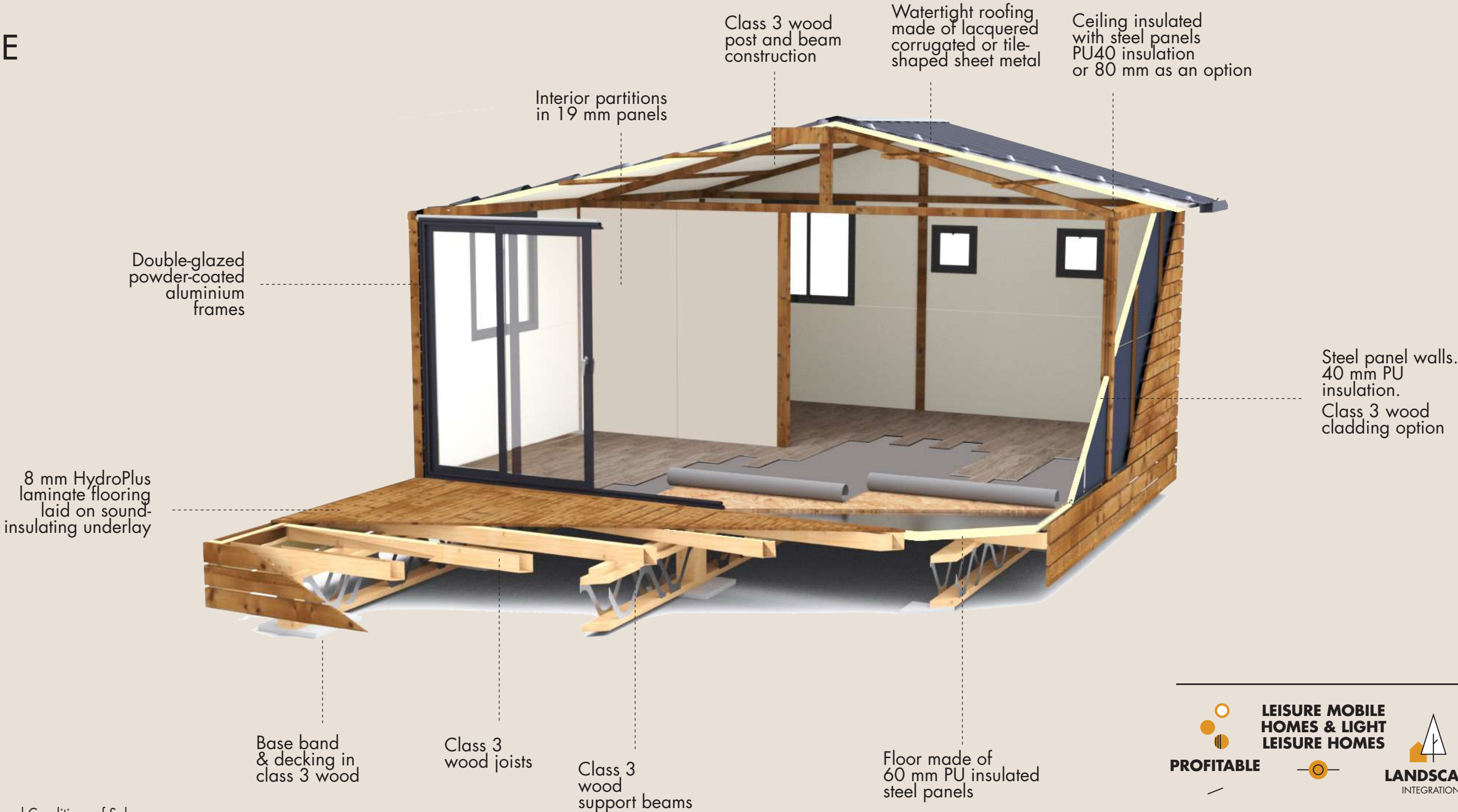
CONSTRUCTIONAL PRINCIPLE

15-YEAR WARRANTY!

Noble, robust materials in thicknesses designed to last. Ensuring untroubled use by our customers for 15 years.



STRUCTURAL WARRANTY
15
YEARS*



An amending order excluding Lightweight Leisure Housing with a surface area of 35 m² or less from the scope of RE2020 was published in the *Journal Officiel* on 29 August 2024.



LEISURE MOBILE HOMES & LIGHT LEISURE HOMES



MORE THAN 250
INDUSTRIALISED
MADE-TO-MEASURE
OPTIONS



THERMAL PROTECTION

GUARANTEED COMFORT FOR HOLIDAY-MAKERS

Because the well-being of your customers is essential, we have designed our chalets to offer a pleasant temperature all year round. Each piece of equipment has been carefully selected to ensure coolness in summer, controlled heat in winter, and quality air on a daily basis.

Keeping cool all summer long

- **Light grey roof (RAL 7035):** a light colour that limits the temperature rise of the roof.
- **Louvred shutters:** keep the interior cool while allowing air to circulate. They allow light to pass through while reducing its intensity in the face of direct sunlight.
- **Pergola with wicker roof:** creates a naturally shaded area on the terrace.
- **Effective air circulation:** all the chalets are cross-through, to create strong draughts in hot weather.
- **Mosquito nets** for ventilation without letting insects in.

Controlled ventilation

- **Ventilation grilles built into the windows:** ensure constant renewal of indoor air.
- **CMV/air extractor box:** removes humidity and improves air quality in the home.
- **Low ventilation:** ensures continuous air circulation, to keep your accommodation healthy even during winter months.

Thermal and acoustic insulation

- **Windows with thermal break system:** for better insulation against both heat and cold.
- **Soundproof glazing:** for a quiet, comfortable interior.

Smart water management

- **Water heater:** each water point is individually supplied and insulated.
- **Built-in valves:** make maintenance easier and reduce the risk of leaks.



OUR CSR COMMITMENTS

15-YEAR WARRANTY!

Durable, wear-resistant products

Our accommodation units feature a unique constructional principle using steel, wood and aluminium. Noble, timeless and durable materials, designed by our Design Office to provide optimum performance and maximum strength.

Our products have a proven lifespan of over 15 years, as a commitment to our customers.

No soil degradation

Our products are placed on the ground on reversible supports.

Our constructional principle requires no foundations, has no harmful effects on the soil and leaves no traces when dismantled.

Logistics optimisation

All the components of our chalets are delivered flat-packed by lorry.

This packaging allows us to transport several accommodation units per lorry, thus limiting our carbon footprint.

Closeness of suppliers

We work exclusively with French and European suppliers, most of whom are based near our factory.

For more than 20 years, we have enjoyed lasting relationships with these trusted, local partners.

Spare parts tracking

The constructional principle of our products means that parts can be replaced quickly and easily, thereby combating planned obsolescence.

It is quite possible to order parts that have been accidentally damaged or worn out over time.

Recyclable materials

The materials used in our accommodation units are recyclable.

Steel, wood and aluminium materials have their own recycling channels in France.

RANGE OF CHALETs

MADE-TO-MEASURE STYLE AND COMFORT

From 20 to 40 m², our chalets can be adapted to any project, from camping to residential accommodation. Their stylish design and optimised fittings offer lasting comfort whatever the season. Modular and harmonious, they blend in perfectly with their surroundings for a warm and welcoming experience.



ZEN+ ATMOSPHERE



Worktop

Walls and partitions

Curtains

Tasmania green

Indiana ochre

Indiana green

Tweed beige

Cushions

Floor

“ —

A warm, balanced atmosphere, combining light golden oak-look wood with sandy beige walls for a soft, bright finish.

The grey stone-like worktop adds a mineral touch, while textured curtains – beige, deep green, ochre or foliage – offer genuine visual richness.

A taupe or green bench seat and terracotta accessories warm up the space, in a style that is soothing, natural and modern.

— ”

NATURE AND NATURE+ ATMOSPHERES



Furniture and partitions
Worktop

“ The **Nature** atmosphere highlights the brightness and warmth of the light-coloured wood on the walls, ceilings and furniture, for an authentic, welcoming interior.

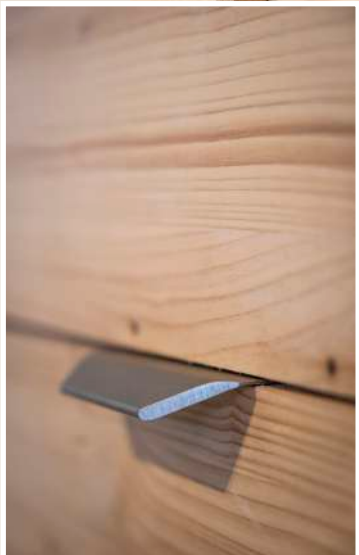
Natural shades blend with a creamy white worktop and textured curtains in shades of green, ochre or beige, creating a simple, harmonious décor.

As an option, the **Nature+ atmosphere** enhances this cosy feel by adding spruce cladding to some of the walls, for an even more enveloping look and a real “log cabin” effect

”



Floor



TINY HOME

■ 1 bedroom



One space, a thousand uses

Modular, versatile and quick to install, the **Tiny Home** can be used for a wide range of purposes: as a reception desk, guest room or glamping studio.

With its stylish design, all-season comfort and wide openings to the outside, it combines aesthetic appeal with practicality.

A real Swiss Army Knife of modern accommodation!

SPACES

20 m² living area	5 m² terrace surface area
2 sleeps	1 room



VICTORIA

1 bedroom

Single-sloped
or gabled roof



Hotel cocoon for two

Compact, warm and sleek, **Victoria** transforms every couple's stay into a cosy, intimate interlude. Designed for small plots, it is a blend of charm, functionality and a cocooning atmosphere.

Better than a hotel room, it is an essential part of the rental offer, as attractive as it is effective.

SPACES

20 m² living area
12 m² terrace surface area
2/3 sleeps
1 independent bedroom



MOREA

■ ■ 2 bedrooms

Roof
single-sloped
or gabled



A must for families

Compact, warm and clever, **Morea** can accommodate up to 5 people in an optimised space. Easy to live with, quick to install and cost-effective, it is the ideal model for combining comfort with peaceful respite... and performance.

A classic in the range, designed to maximise both customer satisfaction and your return on investment.

SPACES

25 m² living area
12 m² terrace surface area
5 sleeps
2 independent bedrooms



MOREA XL

■ ■ 2 bedrooms



Revisited best-seller!

With just 40 cm extra width, **Morea XL** tumbles into another dimension! Master bedroom with queen-size bedding, and multifunctional children's bedroom that can accommodate a second couple or turn into a play area for kids.

The comfortable living room with its clever storage space separates the living area from the dining area.

SPACES

27.5 m² living area	13 m² terrace surface area
5 sleeps	2 independent bedrooms



NOUMEA SMART VIEW

■ ■ 2 bedrooms



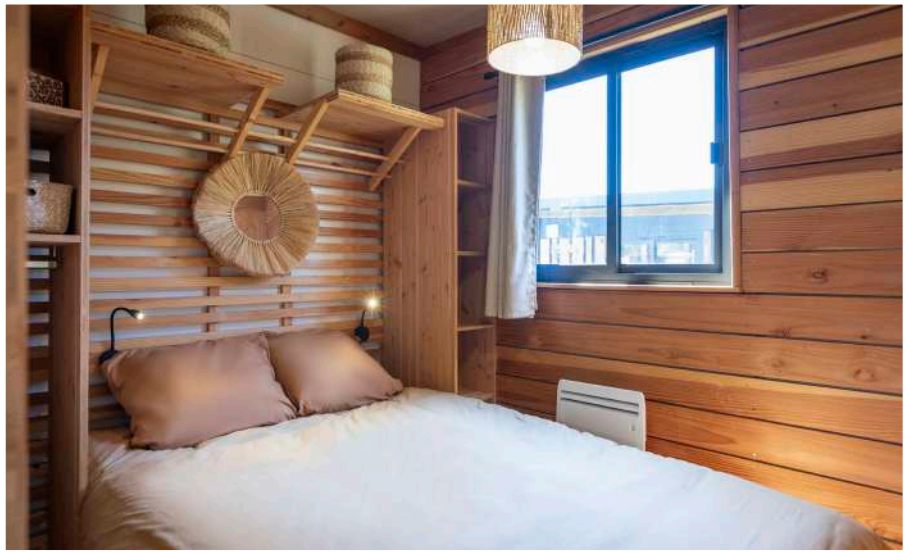
Panoramic experience

Designed to enhance every viewpoint, **Noumea Smart View** is totally open to the outside world. Bright, optimised and stylish, it creates a genuine indoor/outdoor symbiosis.

With its built-in terrace and distinctive design, it transforms every stay into a unique, panoramic and memorable experience.

SPACES

25 m² living area
18 m² terrace surface area
5 sleeps
2 independent bedrooms



COLUMBIA

■ ■ 2 bedrooms



Great comfort and spaciousness

Spacious, bright and ultra-functional, **Columbia** boasts a vast cross-through living room, open-plan kitchen and large outdoor terrace. With its 2 bedrooms, it easily accommodates up to 6 people in a modern family atmosphere.

A model designed for those who love space, inside and out.

SPACES

30 m² living area
19 m² terrace surface area
5/6 sleeps
2 independent bedrooms



TORONTO

■ ■ 2 bedrooms



The ally for comfortable family holidays

With its large living area, two spacious bedrooms and beautiful bay window, **Toronto** makes a big impact with its blend of comfort, modernity and practicality. Designed for deep plots, it offers a fluid layout, ideal for up to 6 people.

A smart, premium format for complete peace of mind.

SPACES

35 m² living area
12 m² terrace surface area
5/6 sleeps
2 independent bedrooms



2-BED PORTLAND

■ ■ 2 bedrooms



Roof
single-sloped
or gabled

Premium residential living par excellence

Spacious, bright and perfectly laid out, the 2-bedroom **Portland** offers a premium living environment. Its large living room, two comfortable bedrooms and galley kitchen will appeal to families and couples on long-term stays.

With its huge terrace and warm style, it embodies a modern, reliable and user-friendly residential offering.

SPACES

35 m² living area
17 m² terrace surface area
5/6 sleeps
2 independent bedrooms



PRM LIBERTY

>     ■ ■ 2 bedrooms



Accessibility without compromise

Reversible, spacious and cleverly designed, PRM **Liberty** meets the needs of disabled customers, families with children and elderly people. With its two shower areas and comfortable master bedroom, it combines accessibility with quality and well-being.

A versatile model, essential to any modern rental offer.

SPACES

35 m² living area
17 m² terrace surface area
4/6* sleeps
2 independent bedrooms

*optional



KINGSTON 35

■ ■ 2 bedrooms / 2 bathrooms



Top-of-the-range hotel accommodation

Unique design, independent suites, 2 bathrooms, outdoor patio... **Kingston 35** redefines premium standards. Designed to appeal to couples, friends or seminars, it offers the comfort of a real hotel stay with second-to-none flexibility of use.

Stylish, bright and distinctive, it is the flagship of our top-of-the-range offering.

SPACES

35 m² living area
22 m² terrace surface area
4/6* sleeps
2 independent bedrooms

*optional



KINGSTON 40

■ ■ 2 bedrooms / 2 bathrooms



Premium residential reference

With its master suite, large living room and well-separated kitchen,**Kingston 40** offers the comfort of a real home. Spacious, stylish and perfectly laid out, it appeals to long-term residents looking for a cosy, upmarket place to live.

An exceptional model, at the crossroads between a residential home and a tiny villa.

SPACES

40 m² living area
15 m² terrace surface area
5/6 sleeps
2 independent bedrooms



OTTAWA

3 bedrooms



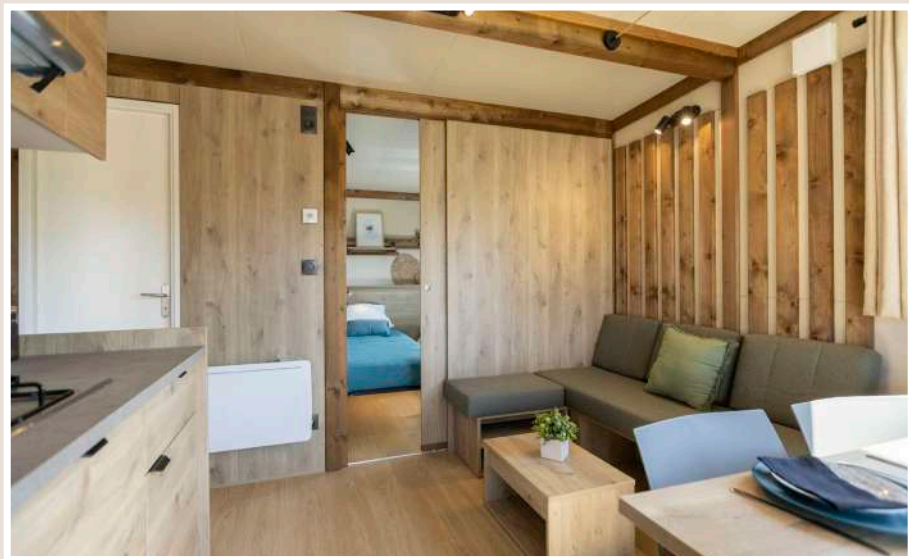
Flexibility at the service of the family

With its 3 well-designed bedrooms and optimised spaces, **Ottawa** is ideal for families with teenagers, couple friends or hikers. Compact and generous at the same time, it offers a well-balanced layout, a master bedroom with access to the terrace, and adaptable bedding options.

An effective alternative to traditional 3-bedroom accommodation, waiting to be discovered.

SPACES

33 m² living area
14 m² terrace surface area
6 sleeps
3 independent bedrooms



3-BED PORTLAND

3 bedrooms



Roof
single-sloped
or gabled

The perfect balance between comfort and capacity

With its 3 well-separated bedrooms, large living room and sizeable terrace, the 3-bed **Portland** is perfect for large families. User-friendly, spacious and functional, it offers a high level of premium comfort over the long term as well as for seasonal rental.

A safe format, suitable for large plots of land and peaceful breaks.

SPACES

35 m² living area
17 m² terrace surface area
6/7 sleeps
3 independent bedrooms



NORTHLAND

3 bedrooms



The authenticity of a chalet, in a compact version

With its genuine mountain spirit, all-weather insulation, playful mezzanine and woody atmosphere, **Northland** reinvents the tiny chalet. Warm, robust and clever, with plenty of storage space, it is the ideal cocooning space for winter and summer alike.

A real chalet full of conviviality and charm.

SPACES

30 m² living area
12 m² terrace surface area
6 sleeps
2+1 independent bedrooms



RE2020 CERTIFIED

RANGE OF TINY HOUSES WITH CANVAS ROOF UTMOST COMFORT, NOMADIC SPIRIT

With the Karavan' range, rethink mobile accommodation by combining lightness with functionality. These tiny houses with canvas roof offer optimised comfort in a structure that's easy to install and move. With their canvas awnings, they provide extra living space and protection, enhancing the outdoor experience. An ideal solution for eco-responsible, flexible tourism, without compromising on well-being.



Karavan': accommodation reinventing mobility

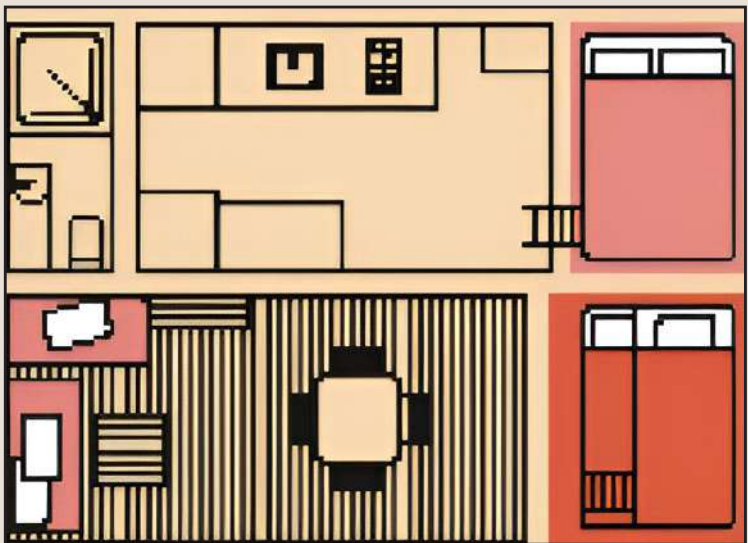
> Karavan' 6 and 7 have been designed and created to offer a range of experiences and unique indoor/outdoor living spaces. Their surface areas can be adjusted thanks to canvas awnings, allowing you to increase the living area. The canvas awning allows for modularity of use. Closed in case of bad weather, it turns into a large sheltered lounge. Open in most cases, it gives you a shaded open terrace.

> The overall footprint of this accommodation is smaller than that of a traditional chalet, saving the surface area of a terrace.

> The wheeled chassis make these accommodations more mobile and compact. The other key factor is adaptability to all types of terrain and constrained areas, particularly flood risk areas.



2-bedroom version:



3

Optional extras:
increase your capacity
with the rear awning

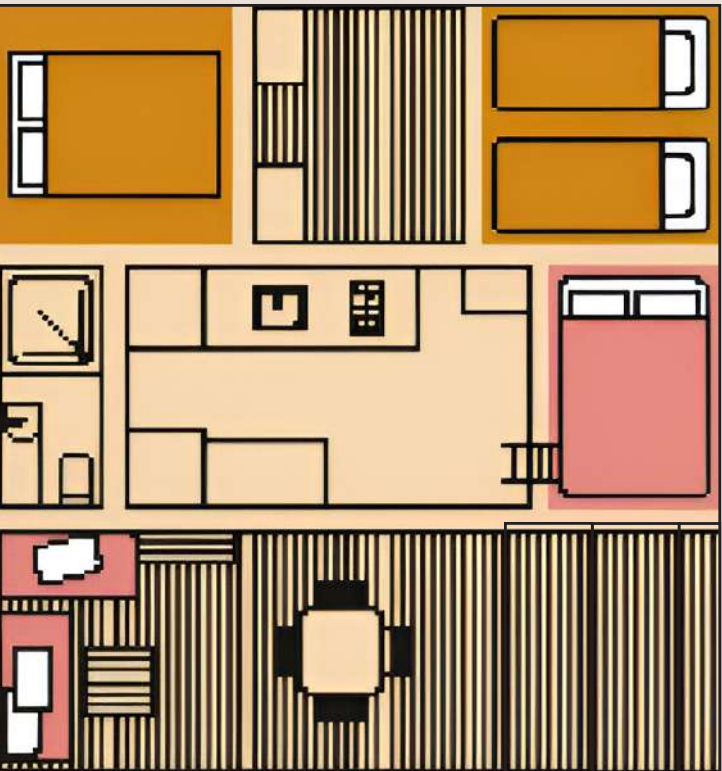
1

Standard:
central module and
terrace floor

2

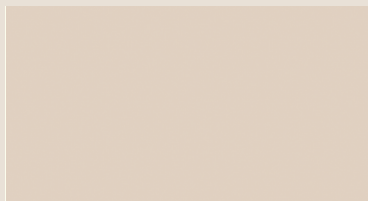
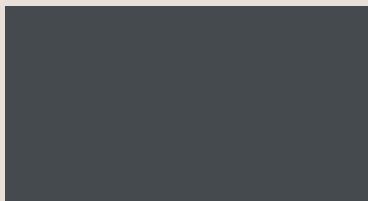
Optional extras:
equip the terrace
with a waterproof canvas
cover, bedroom, table,
bench seats

3-bedroom version:



Watch the video of
the Karavan' module!

KARAVAN' ATMOSPHERE



“ —

A bohemian chic atmosphere that blends authentic materials with a nomadic spirit. Raw, weathered wood sits alongside black and ecru graphic textiles, reminiscent of ethnic motifs.

Warm colours – terracotta, sandy beige, cream – add warmth to the space, while touches of safari spirit creep into the decorative details.

A warm and exotic world, designed for adventure in style and comfort.

— ”

Curtains



Safari spirit!



KARAVAN'6.6



The tiny house that circumvents constraints

Designed for difficult areas, **Karavan'6.6** is mobile, modular and registered. Its compact, clever format makes it an ideal solution for small plots, short stays or atypical projects.

A unique glamping experience, combining comfort with freedom and controlled regulation.

SPACES

16.5 m² living area

4 sleeps

15.5 m² terrace surface area

1 room



KARAVAN'6



The glamping alternative that makes all the difference

Designed as a premium alternative to tent accommodation, **Karavan'6** combines modularity with comfort and a new look. Adaptable to any plot, even the most complex, it offers an attractive and cost-effective glamping experience. As an option, its chassis can be registered.

Lightweight, atypical and easy to install: a real plus for enhancing your range.

SPACES

14/40 m ² living area	9/13 m ² terrace surface area
2/6 sleeps	1/3 independent bedrooms



KARAVAN'7



The glamping experience designed for families

User-friendly, modular and spacious, **Karavan'7** reinvents family holidays. With its cabin style, multiple sleeping arrangements and optimised comfort, it combines the originality of a canvas tiny house with the practicality of premium family accommodation.

A scalable solution, ideal for large plots of land... and family memories.

SPACES

16.5/38 m² living area

2/6 sleeps

11/16 m² terrace surface area

1/3 independent bedrooms



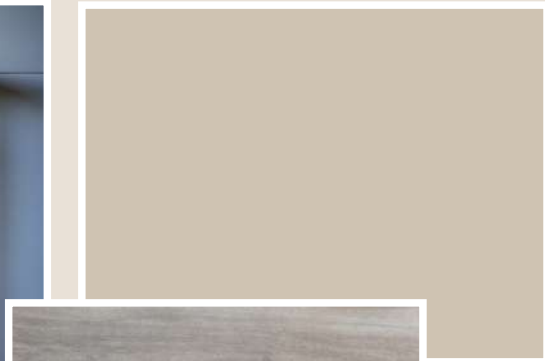
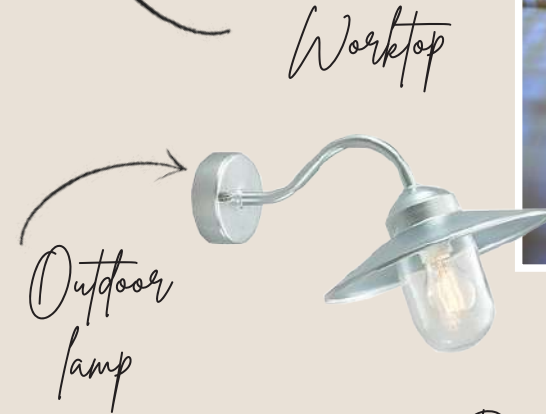
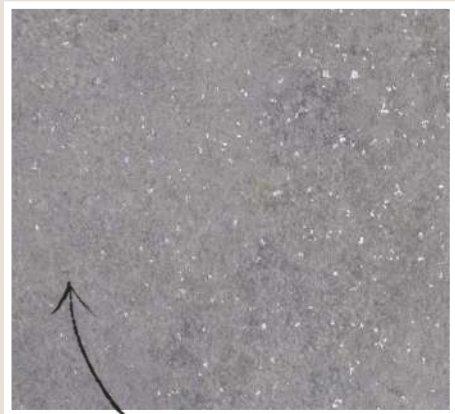
TRAILER RANGE

TRULY PEACEFUL RESPITE

Treat yourself to a unique experience with our timelessly charming trailers. Designed to combine comfort with a bohemian feel, they fit perfectly into any environment, from campsites to unconventional lodging. With their wooden structure, high-performance insulation and optimised layout, they guarantee a warm and relaxing immersive experience. An invitation to travel, without compromising on well-being.



TRAILER ATMOSPHERE



“ A bright, welcoming atmosphere, supported by light wood walls and sleek furniture. The stone-like worktop adds a stylish mineral touch, while the deep green curtains give rhythm to the space and create a natural contrast.

Wicker hanging lights cast a soft glow, adding to the warm atmosphere. The result is a harmonious, functional and timeless interior.

”

TINY TRAILER

■ 1 bedroom



Unconventional charm for couples

Unconventional, charming and resolutely cosy, the **Tiny Trailer** invites you to an experience untouched by time. Perfect for a couple's weekend away, it combines the bohemian feel of a trailer with the comfort of glamping accommodation.

Small, well thought-out space where great memories are shared.

SPACES

14 m²
living
area

2 m²
terrace
surface area

2/4*
sleeps

1
independent
bedroom

*optional



TRAILER 22

■ ■ 2 bedrooms



Unconventional, spacious accommodation for the entire family

With its unusual design, optimised layout and size, **Trailer 22** combines charm with comfort and relaxation.

Ideal for short breaks with the family, it embodies a new, unconventional way of living, while remaining cost-effective and easy to integrate into your rental portfolio.

SPACES

22 m² living area
4 m² terrace surface area
4 sleeps
2 independent bedrooms



SEASONAL WORKERS ACCOMMODATION RANGE

Offer a practical, comfortable solution to accommodate seasonal workers. Designed to meet the needs of seasonal workers, they combine functionality with quality of life. Their robust design, appropriate insulation and optimised layout ensure a pleasant living environment, even for long stays. Reliable, comfortable accommodation to welcome your teams with peace of mind throughout the season.



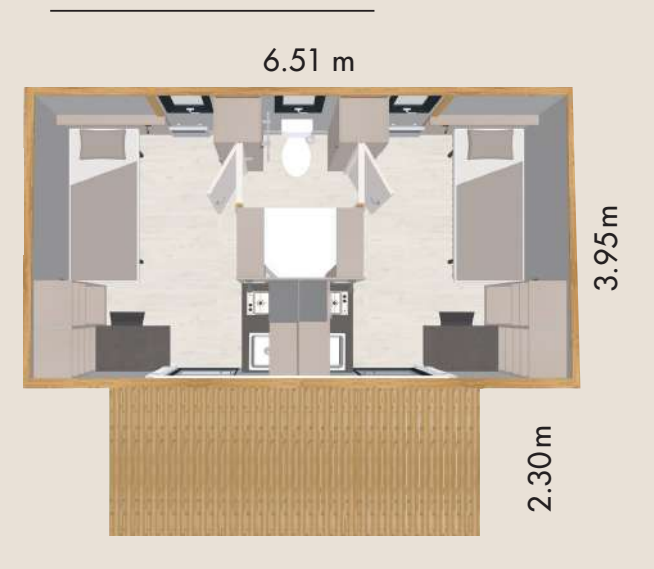
TEAMCAMP

The accommodation solution for your seasonal workers

Mobile, compact, functional and quick to install, **Teamcamp** is a practical response to the accommodation needs of your seasonal staff. Comfortable and optimised, it fits easily into small locations and encourages staff loyalty.

A real asset for attracting, housing and retaining your seasonal workers over the long term.

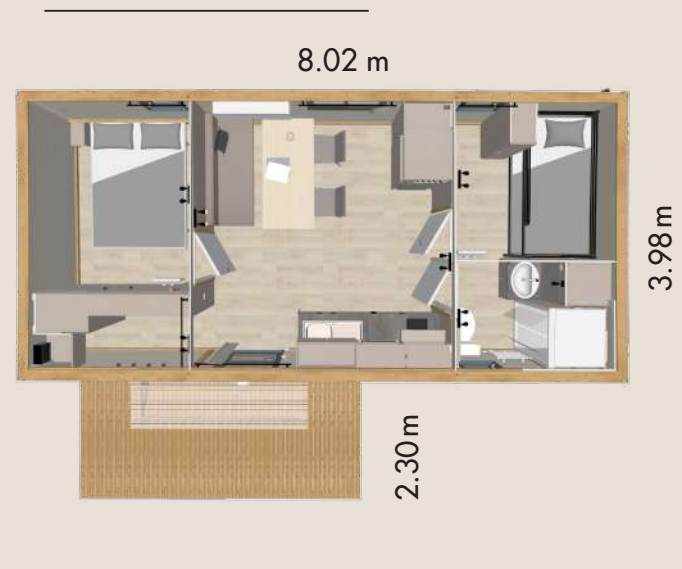
teamcamp 19



19 m²
living area

10 m²
terrace surface area

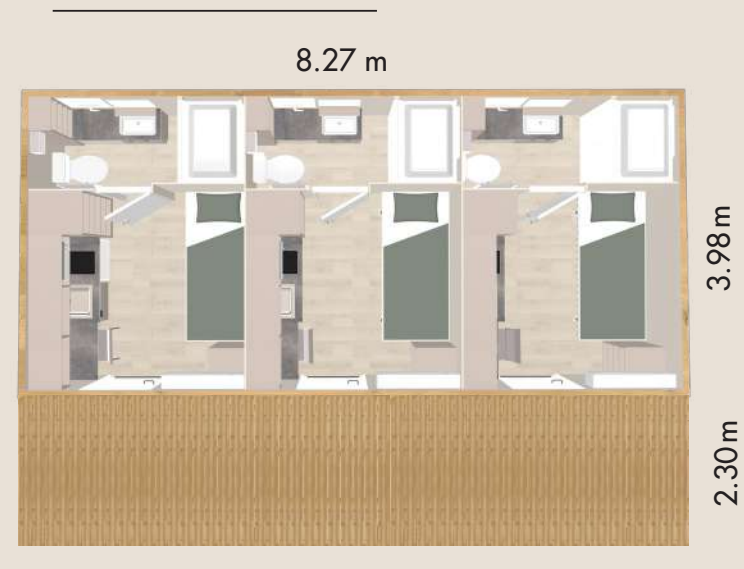
teamcamp 25



25 m²
living area

10 m²
terrace surface area

teamcamp 27



27 m²
living area

17 m²
terrace surface area



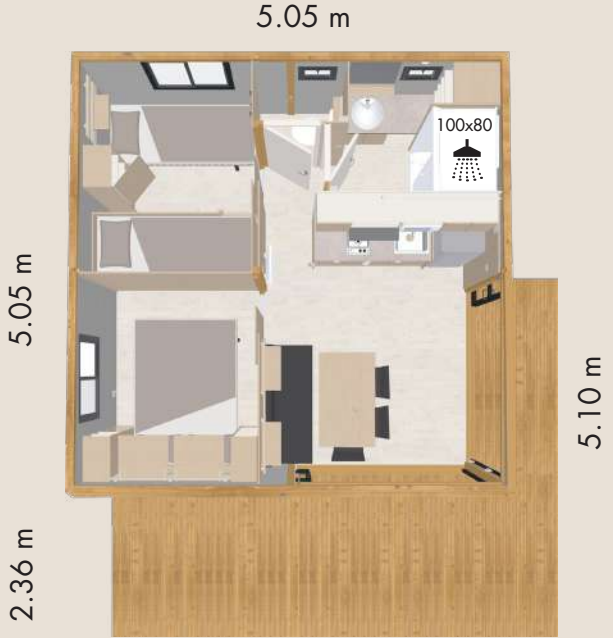
PLANS

tiny home

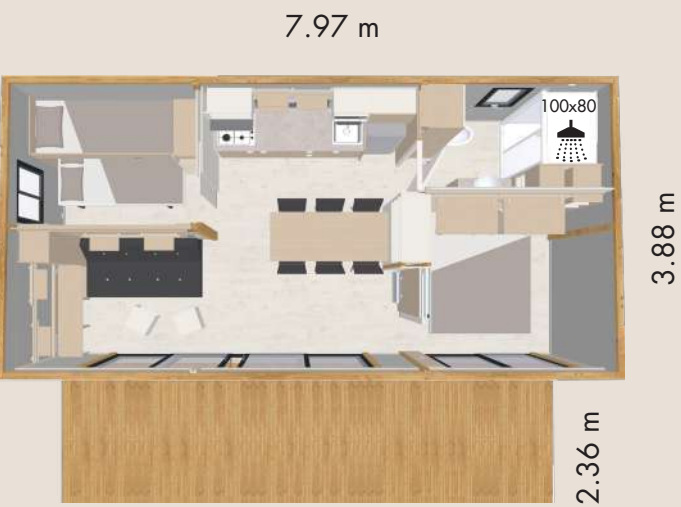


victoria

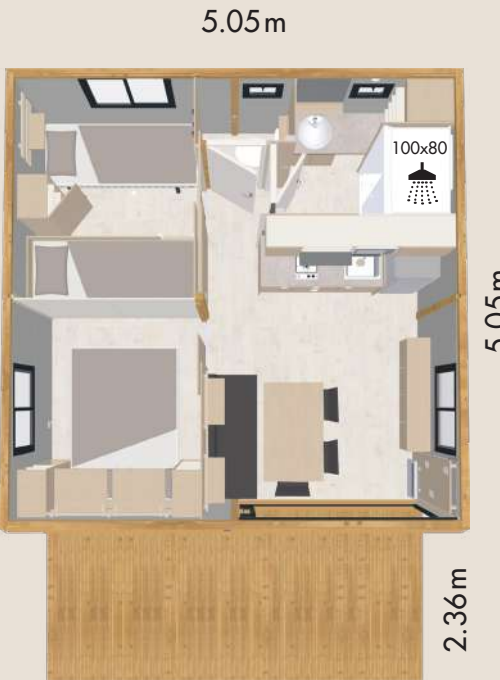
noumea smart view



columbia



morea



5.45 m



morea xl

toronto



2-bed portland

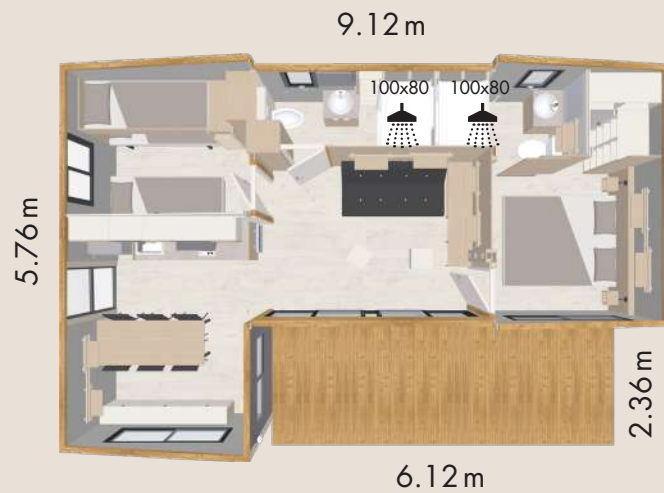
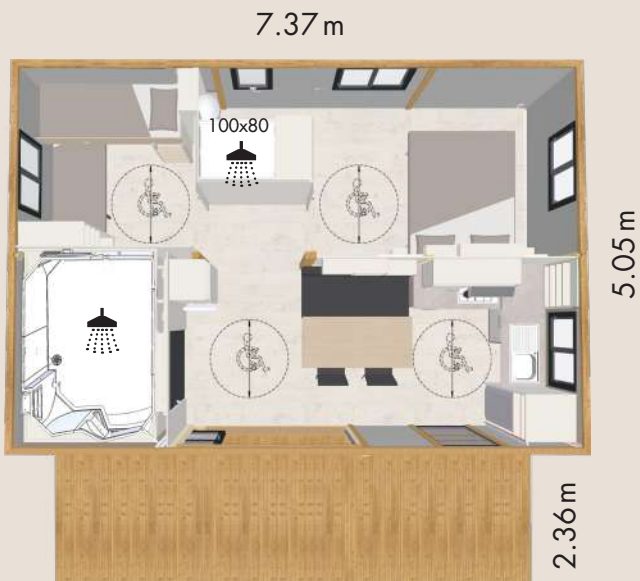


PLANS

kingston 35

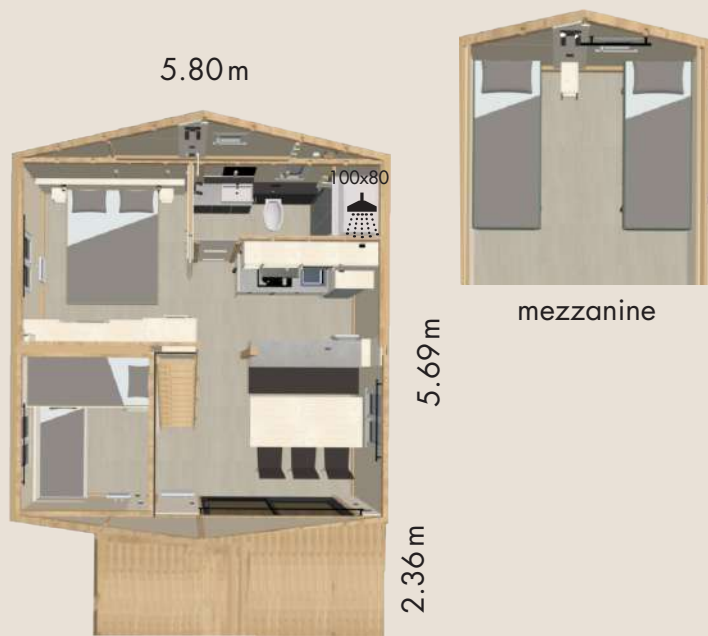


prm liberty



kingston 40

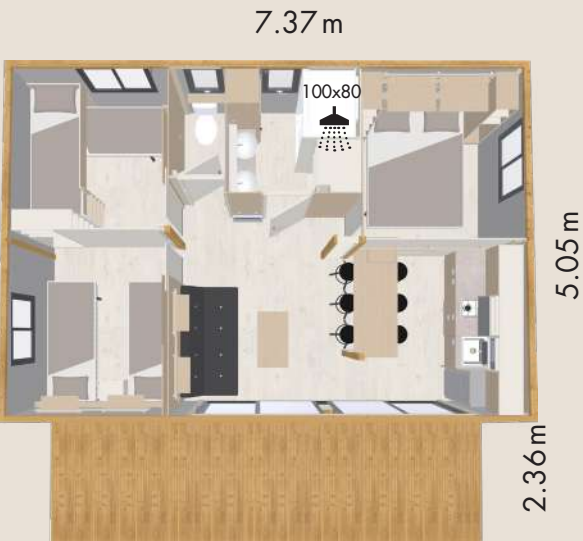
northland



ottawa



3-bed portland

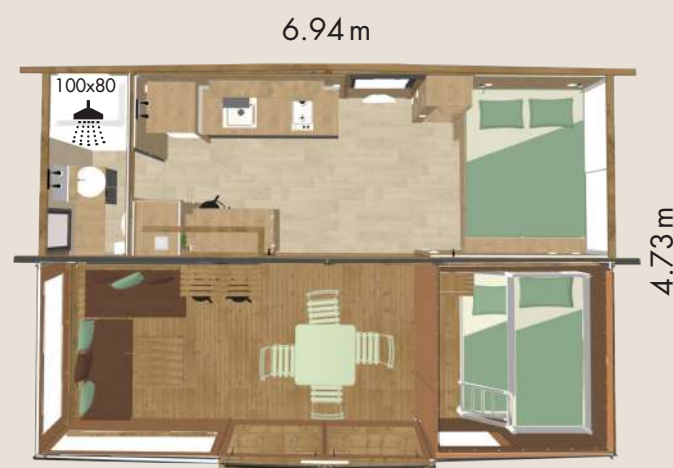


PLANS

karavan'6.6



2-bed karavan'7

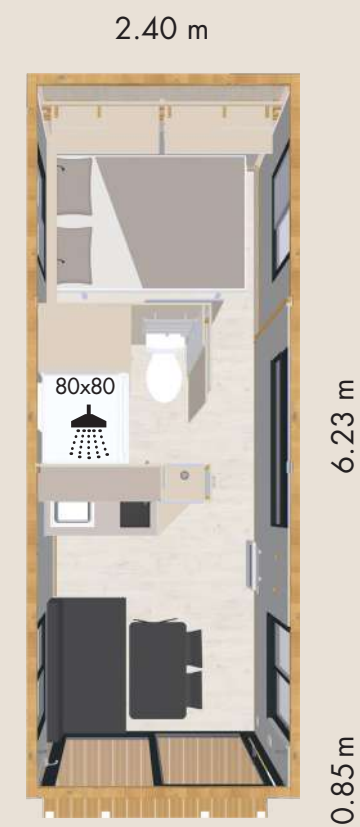
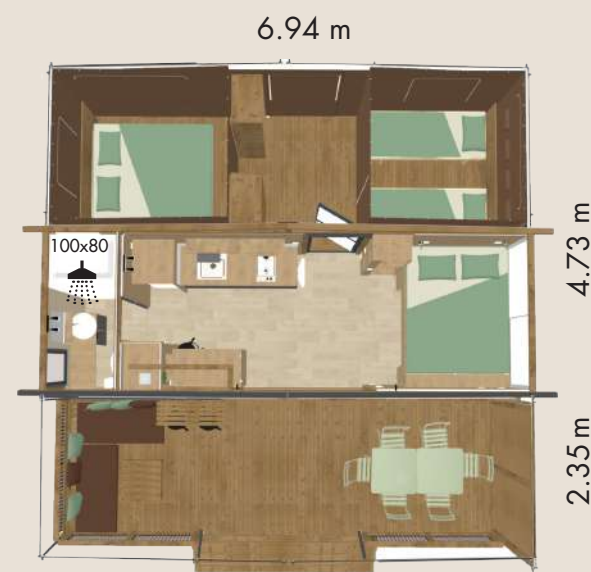


2-bed karavan'6

tiny trailer



3-bed karavan'7



trailer 22



Plans and 3D visuals are non-contractual. All dimensions exclude roof eaves. Roof eaves are 20 to 40 cm per side and at the rear of the accommodation.
Photo credits: Manu Reyboz / Céline Vautey / Alex Tarin / Ivan Franchet
Printed by: Imprimerie Faurite



Hekipia

TINY HOUSE

73 route de Lentilly CS68206,
69380 Chessy les Mines,
FRANCE
+33 (0)4 37 64 64 74

contact@hekipia.com
www.hekipia.com

